



eventide
homes

STAWELL INC



Annual Report

2017 - 18

Community Spirit

Mission Statement

Eventide Homes (Stawell) Inc. aspire to provide premium, stimulating and innovative accommodation and care.

Vision Statement

Eventide Homes will:

- Be responsive to communal needs;
- Respond positively and creatively to the needs of older people;
- Strive at all times to promote the maintenance of independence and self-determination for older people, and provide a friendly, comfortable, supportive, attractive and homely residential environment and individual lifestyle;
- Demonstrate commitment to prudent administration and management of the finances and assets entrusted to it by the community;
- Be a good employer, maintaining an environment in which staff are valued, supported in their endeavours and development, and valued for their contribution of excellence.
- Strive to continuously improve in all areas including the Aged Care Standards.

Care Statement

Eventide Homes shall provide individualised and resident focused services and care, through an empathetic and experienced team in a dignified and trusting environment.

Values Statement

Eventide Homes values and respects:

- The inherent worth of each individual;
- The contribution made by all people committed to the organisation, its mission and those it seeks to serve;
- The particular and unique contribution which older people are able to make to the community;
- The commitment and caring concern of its staff;
- Innovation and a capacity to be forward thinking; and
- The trust, which has been vested in it by the community.

Annual Report 2017-18

With the compliments of the Chair Mrs Julie Dunn and Directors of the Board of Governance.

64th Annual Report for the year ended June 30th, 2018.

Presented at Annual General Meeting of Contributors, October 10th, 2018.

Designed by Renee Baulch, WabiSabi Design
Compiled by Toni Williams
Financial Auditors - Crowe Horwath
Photography by Toni Williams,
Kerri Kingston & Peters Pix

Regulatory Information

Associations Incorporation Number - A0028462X
Aged Care Act Registration Number - 3345H
Australian Business Number - 26 648 709 275

Eventide Homes (Stawell) Inc.
111 Patrick Street
Stawell Victoria 3380 Australia

Phone: 03 5358 2027
Facsimile: 03 5358 4163
Email: administration@eventidehomes.com.au
Website: www.eventidehomes.com.au
facebook.com/eventidehomesstawell



Contents

02	MISSION STATEMENT
02	ABOUT THIS ANNUAL REPORT
02	REGULATORY INFORMATION
03	CONTENTS
04	ABOUT EVENTIDE HOMES
05	BOARD OF DIRECTORS
07	MEET DAVID & EDNA
08	CHAIR REPORT
10	ORGANISATIONAL CHART
11	CEO REPORT
13	VILLAGE LIFE
14	DONATIONS & BEQUESTS

14	SPECIAL AWARDS
14	VOLUNTEERING
15	COMMUNITY SPIRIT
16	MEET HAROLD
17	CORPORATE REPORT
18	CARE REPORT
19	OUT & ABOUT
20	LEISURE & LIFESTYLE REPORT
22	MEET CHARLIE
23	FINANCIALS AT A GLANCE
24	INCOME & EXPENSES STATEMENT
25	STATEMENT OF FINANCIAL POSITION
26	YEAR AT A GLANCE

About Eventide Homes



Eventide Homes is situated in the picturesque regional City of Stawell, just two-and-a-half hours' north-west of Melbourne, and 20 minutes from the famous Grampians mountain range.

Established in 1953, Eventide Homes is one of Western Victoria's most progressive senior lifestyle villages, offering independent residential living options and an aged care hostel on site if you require residential care in the future.

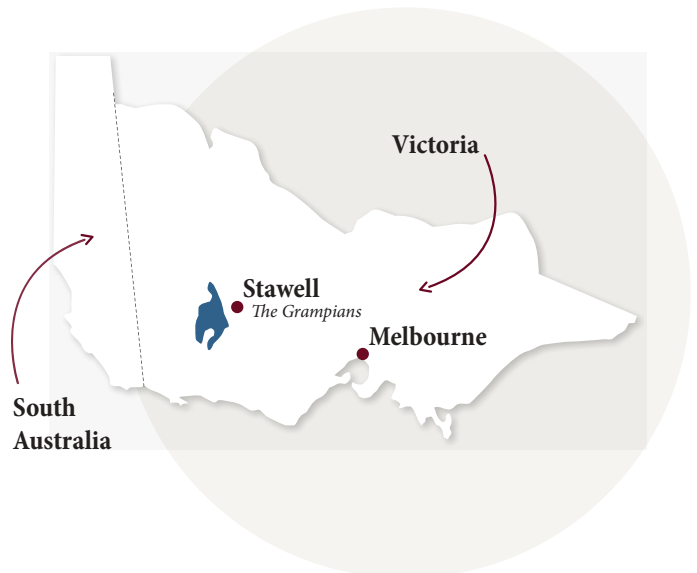
Our highly qualified and experienced staff provide outstanding personal care in a caring and supportive environment and go the extra mile to ensure all residents are active, socially engaged and connected with the broader community.

About Residential Living

We have 100 residential aged care beds for seniors. Each single room has a private en-suite and some rooms can be adjoined to suit married couples. We also have a state-of-the-art wing to support residents who are experiencing memory loss.

About Independent Living

Independent living accommodation is available to people over 55 years who have retired from full-time work. All accommodation is safe and private and tailored for a wide range of mobility aids and connected to a 24-hour emergency service.



Services Provided

- Beautician
- Cleaning
- Computer & Internet access
- Hair Salon
- Meals
- Onsite laundry services
- Onsite physiotherapist
- Personal care
- Visiting Medical Specialists

Visiting Medical Specialists include audiologists, doctors, dental technicians, pathologists and podiatrists.

Board of Directors



Julie Dunn - Chair
Commenced on the
Board of Governance 2008



Kaye Harris
Commenced on the
Board of Governance 2010



Reg Smith
Commenced on the
Board of Governance 1994



Peter Barham
Commenced on the
Board of Governance 2017



Leanne Parker
Commenced on the
Board of Governance 2017



Roger Warne
Commenced on the
Board of Governance 1985



Peter Greenberger
Commenced on the
Board of Governance 2015





*‘True love has triumphed
well into retirement
for David and Edna Osborne.’*



Meet David & Edna

True love has triumphed well into retirement for David and Edna Osborne.

Married for over 39 years, the couple moved to Eventide Homes together a year ago. Both David and Edna enjoy the care they receive living here at Eventide and say you couldn't wish to live in a better place.

Before they took up residence here, they owned and ran a shop in Stawell for 11 years. Prior to this, David worked as a panel beater in the town for almost forty years, whilst Edna kept busy teaching Fine China painting classes.

David and Edna recall lives lived through a lot of change, from the move from horse and cart to car, to the first moon landing and the invention of the TV.

*One major thing has stood the test of time
- A very happy marriage.*

Resident profiles completed by
Stawell Secondary College Students.



Chair Report 2017–2018

On behalf of the Board of Governance it is my honour to present the 64th Annual Report for Eventide Homes for 2017/2018.



Above: Chair - Julie Dunn & Volunteer Co-ordinator Rebecca Farrell

The past twelve months have, once again, been extremely busy. We are fortunate to have a dedicated group of Board Directors supported by a hardworking CEO, Management team and staff all focused on providing a safe and well maintained living place for residents, and offering choice in care and activities to suit the differing needs.

I am delighted to report that new ideas presented at the Tri State Conference in Albury, which was attended by several Board members with CEO Sue and Care and Lifestyle Manager, Cathy have been integrated into the regular activities and have improved the lives of our residents. Congratulations to staff that have developed the concepts of afternoon tea at Eventide cafe, and the Pub meals within our site, to name a couple of those ideas.

The Board has continued to review their governance procedures throughout the year and implemented the TAGS System of Policies and associated tools, in association with Michael Goldsworthy. This system assists Eventide Homes to manage the many compliance requirements set by Government ensuring the organisation is sustainable into the future. Board Committees now deal with Development, Governance, Clinical Governance, Finance, Audit, Risk and Compliance, allowing greater discussion and understanding of issues.

Over the last twelve months residents will have noticed many improvements in both the hostel and around the Independent Living units or the Plantation. In the hostel we have plastered over many brick walls, upgraded the kitchenette in McGregor House, upgraded bathrooms in Cashin and McGregor and transformed 4 single rooms into 2 “married couples” rooms. Warne House roof has been repaired and TV reception in the hostel has been upgraded.

A shaded structure over the courtyard in Grampians House has made the space more attractive and usable in warmer months and the donation of a glasshouse has allowed residents to participate in gardening activities more easily.

Other improvements include purchase of new furniture in Grampians House lounge and six new Floorline/ LO LO beds which have improved the comfort and safety of residents with particular needs. Nine “Life Comfort Acute Care mattresses” have also improved the comfort of residents with acute health needs.

Whilst not visible to hostel residents I’m sure you are aware Eventide Homes now has many solar panels on its main roof, generating power and helping to reduce our ongoing power costs. This installation was a significant cost however over several years the reduction in power bills will effectively repay our outlay and over time the

savings will be a huge benefit.

This year our building team has completed Plantation Houses six and seven. They have replaced concrete paths and installed garden seats in the communal area. The Board has allocated a budget of \$400,000 for developing Stage 2 of the Plantation, which, linked to a grant from Northern Grampians Shire will be used to move this project forward.

We have also committed \$3.6 million for an upgrade of the Hostel, and appointed Architect Darragh O’Brien from DOBA. Thank you to staff, residents and community members who have participated in preliminary discussions with Darragh; we look forward to receiving his plans and ideas.

Eventide homes updated website and improved Facebook presence have allowed distant family members and friends to keep up with activities here. Thank you to the staff who organise fun activities and to those who take photos and post them up for us to share.

Thank you also to the many Volunteers who assist staff and residents in many ways. Your gift of friendship and assistance allows our residents to join in a wider range of fun activities, improving their quality of life. It has been wonderful to welcome new volunteers to our hardworking group.

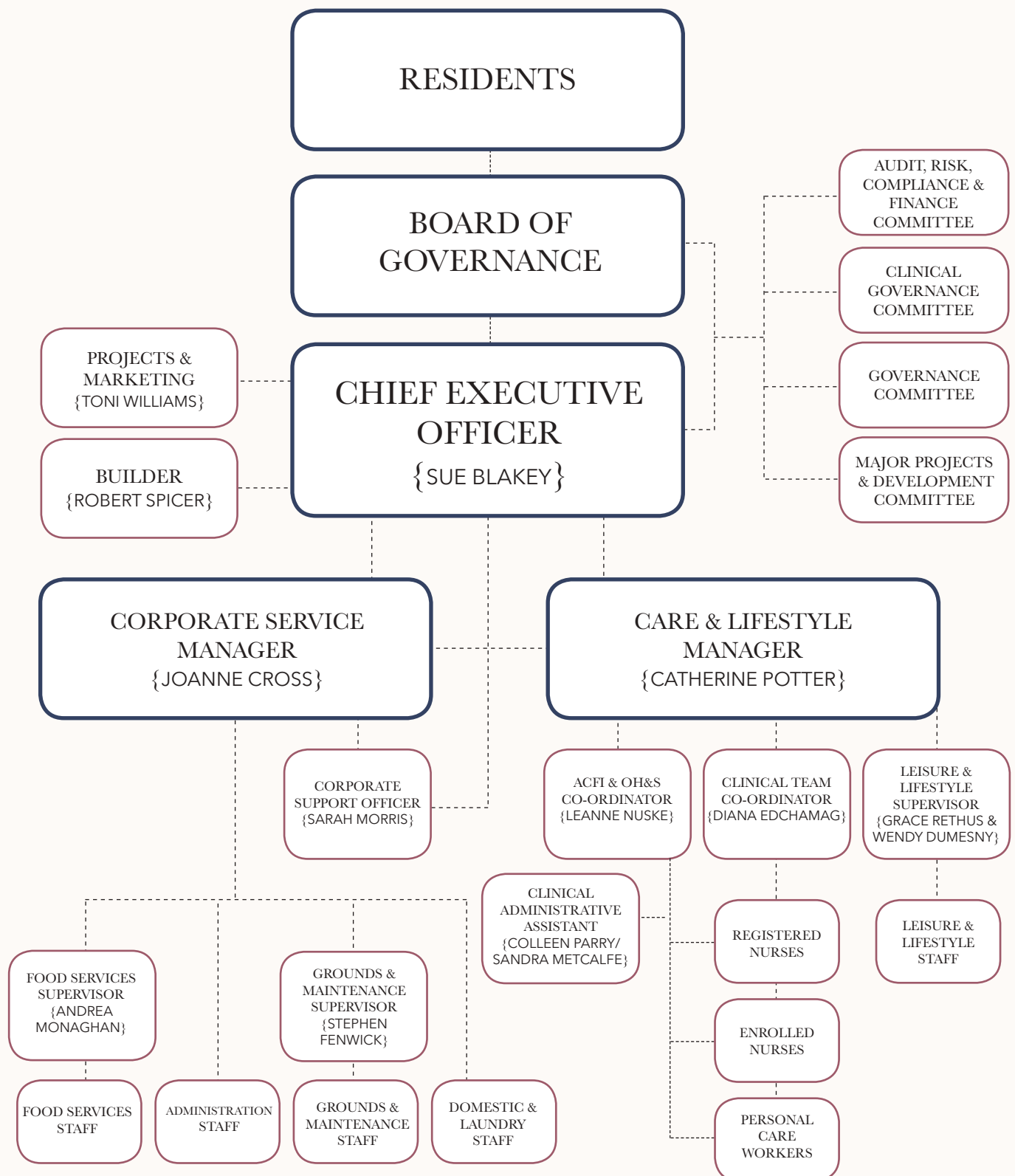
In the next 12 months the Board will be working to ensure the ongoing success of Eventide Homes to provide an exceptional level of care to all residents now and in the future. We are grateful for the support of the Community and hope the consultations regarding our Master Plan continue to supply feedback and ideas so we can confidently progress.

I would like to thank my fellow Board Directors, CEO Sue and all staff for their continuing support and assistance over the last 12 months as it has made my role as Chair an enjoyable one.



Julie Dunn

ORGANISATIONAL CHART



CEO Report 2017–2018



The 2017-2018 year was marked as a year of significant improvements to the Systems, Processes and Governance of Eventide Homes. Our Board Directors have been busy introducing the new TAGS (The Australian Governance System) and have also embraced technology. Directors now receive meeting notices and all correspondence on their iPads. We have transformed to paperless and the Board room certainly looks a different setting than 12 months ago.

With the introduction of the new Accreditation standards due to be implemented next year, we have been working on consolidating these changes which will strengthen and improve our quality improvement processes. Recruiting and retaining a quality, diverse workforce will be paramount to enhance the ability to meet client needs and preferences. The long term goal is to transform Eventide into more of a hotel rather than a hostel.

We are committed to planning for a community approach to bring the community into Eventide. The last few years have seen residents become more frail and unable to mingle outside our grounds of Eventide.

We will be focusing on a community ageing approach to make it easier for older people in the District to interact with our services. We want older people to maintain their physical, mental and social health for as long as possible and have a better quality of life. The link to the local community is paramount in the success of this program.

We have recruited extensively to improve our volunteers program and also working towards a more professional approach with volunteers being rostered for duties.

CEO

Report - *Continued*

2017–2018

We have taken advantage of the younger brigade of our community to interact with residents. A recent resident profile completed by students of Stawell Secondary College in conjunction with the Historical Society has been a very innovative program.

Our building program has been ticking along nicely over the past 12 months. We work very closely with Officers of the Northern Grampians Shire and I wish to thank them for their assistance.

We were successful in obtaining a Grant from the Shire through their Business Assistance Scheme. These monies will go towards the Infrastructure Planning for Stage 2 of The Plantation.

On a quarterly basis I meet with the CEO's of Stawell Regional Health, Grampians Community Health Centre and Northern Grampians Shire. These meetings are beneficial in the planning for services throughout the Shire. As a small community we need to work together to provide the best possible services in the most efficient manner.

I am pleased to advise we have been running at 100% capacity over the last six months. This poses the question, "How many more beds should we be looking at building?"

Information Technology in Aged Care is becoming more the norm. Residents with iPhones, iPads and Skyping their families is now a common occurrence. We look forward to the NBN arriving and connecting all our residents to the world of technology.

The recent installation of solar panels will contribute to reducing power costs and will assist to make Eventide more financially viable into the future.

Our partnership with SW Tafe enabling students to train on site has been a success and we are hoping this program will continue.

We recently celebrated "Aged Care Employee Day" to celebrate each and every team member involved in the journey of caring for our residents. To our nurses and care workers, our cooks and hospitality teams, our cleaners and laundry employees, to our volunteers, our leisure and lifestyle officers, our Grounds and Maintenance gang, our marketing officer, our builder and our administration team,

I wish to specifically thank you all for the manner in which you go about your duties, the way you take the initiative to solve problems as they occur and especially the way you all work so well as a team, irrespective of the particular department you work in.

I wish to specifically thank Joanne, our Corporate Services Manager and Cathy who has commenced this year in the Position of Care & Lifestyle Manager. Thank you both for your support.

Thank you to Chair Julie and Directors for your guidance and direction in ensuring Eventide is a viable organisation both today and into the future.

Being a part of Eventide is a very fulfilling experience. The interaction with staff, residents and their families, volunteers and people from the wider community compliments the day to day chores. We are all here for the one purpose, to make Eventide a "Great Place to Live".

Sue Blakey

Sue Blakey
{Chief Executive Officer}



Village Life



Marg Walker



*Eileen Cooper &
Christine Johnston*



George McDonald



*Jeanette Howard &
Wendy Dumesney*



John Jeffery



*Carmel Hernon &
Jane Gaversgaard*



*Beth Hodgetts &
Monica Hosken*



*Alan Schaper &
Grace Rethus*



*Mavis Potter &
Son Ian Potter*

Special Awards

Each year the Board of Governance may present Life Governorships or Certificates of Appreciation to community members for their valued support to Eventide Homes and to long serving staff members.

This year's recipients are:

Certificate Of Appreciation

- Ian Campbell
- Julie Campbell
- Robert Fry
- Geoff Harmer
- Sue Harmer
- Joy Harrington
- Andrew Reading
- Neil Thornton
- Sheila Thornton
- Rosine Weir

Life Governance Award

- Julie Dunn 10 years

Staff

- Tanya Dean 10 years
- Beverley Redford 10 years
- Donna Hay 15 years
- Stephen Fenwick 30 years

Get Involved with Eventide Homes

Spending time with Eventide residents can be a beautifully rewarding experience and play a vital role in enhancing their lives.

We encourage our volunteers to share their time on an activity that they love doing.

It is these little moments of companionship that often lead to beautiful friendships and lasting memories.



We currently have volunteers assisting with:

- Art & Craft
- Cooking
- Bingo
- Music
- Reading
- Walking groups
- Bus Outings
- Church Services
- One on One with residents
- Resident shopping

Volunteering is a wonderful way to stay social, learn and become part of your community. Eventide Homes greatly appreciate all the precious hours provided by our team of volunteers.

If you have a skill you would like to share with Eventide residents or would like to enquire about volunteering at Eventide Homes please contact Rebecca Farrell on (03) 5358 2027.

Donations & Bequests

Eventide Homes is a not-for-profit organisation and therefore relies heavily on Federal Government assistance to fund operations.

In the past, we have been very fortunate to receive bequests and donations from our residents, their families and local organisations. This enables us to continue to provide high quality care and purchase much needed items. ***If you are interested in learning more about donating to Eventide Homes, please contact us on (03) 5358 2027.***

Community Spirit



Carmel O'Callaghan & Sheila Thornton



Biggest Morning Tea



Nancy Rutter enjoying the Mums & Bubs session with Emma Clarke & Son Jack



Anzac Day Service



Eventide Classic



Irene McGregor with Stawell Secondary College students



St Pat's Choir



Zumba demonstration



Arch Conn & Wendy Dumesney



Meet Harold

For 12 years, Harold Blake has been brightening Eventide Homes with his friendly demeanour and colourful poetry.

A Navarre local, Harold's bubbly and warm personality sees him making friends just about anywhere he goes. Around Eventide he can be found catching up with his neighbours for a cup of tea or on the exercise bike cycling away.

As a young man, Harold left school early to pursue his dreams of becoming a sheep shearer and a woodcutter. He moved from Navarre to Stawell with his wife June and together they raised four children. A member of the Stawell Golf Club, Stawell Harness Racing Club and a Life Member of Navarre Cricket Club, he was always doing something.

Harold's poetry reflects his love for the community at Eventide, where he has deservedly been honoured with a Life Governorship. He has certainly made a home for himself here, as can be felt through words such as:

"Come and spend a day with us, and have a good look around, you will see how contented you could be, of that I am surely bound."

- Harold Blake 2013

Resident profiles completed by
Stawell Secondary College Students.

Corporate Report

Staffing Profile

Eventide Homes values and recognises the different contributions and efforts of our team and seek to involve and work with each other in a professional and co-operative manner.

Our organisational development approach has been focused on assisting staff to reach their potential by providing them with a range of learning opportunities in a variety of settings.

Continuous Improvement

Our focus is 'results'

Our continuous improvement system is an ongoing effort to improve products, services and processes and to raise our home's performance.

We also acknowledge the numerous cards and gifts received from residents families congratulating staff on the wonderful care their family member receives. We welcome all comments in the knowledge that this is a shared endeavor to keep improving our performance.

Maintenance Program

Our ongoing commitment to safe environments keeps our Maintenance team busy.

Food Services

Meals are the highlight of our residents day.

Administration

Our admin team is highly reliable with their indispensable skills

Environmental Services

Our Environmental Services Team maintained extremely high standards of cleanliness throughout the facility.

I look forward to the oncoming year and responding to the challenges that lie ahead.

Joanne Cross

Joanne Cross
{Corporate Services Manager}



Care Report

A change in leadership occurred in the last twelve months at Eventide Homes. The transition to my role as Care & Lifestyle Manager has been very straight forward, partly due to being able to work along-side recently retired Erica Bostock. Erica was a fantastic mentor and the philosophy we share is to guide and support staff from within Eventide Homes. This maintains a great sense of community for residents. I have enjoyed working alongside Diana Edchamg, in her new role as Clinical Care Co-ordinator.

We welcome Occupational Therapist - Elizabeth Jacob to Eventide and are looking forward to a new Physiotherapist joining the clinical team, at Eventide very soon. These two appointments will enhance our clinical management team. The benefits of having both a Physiotherapist and Occupational Therapist will be extremely advantageous for timely assessments, interventions, improved mobility, decrease in fall rates, group classes and maintaining the 4B program to support ACFI Claim Funding.

Eventide Homes is currently at 100% occupancy with several people on the waiting list therefore I have focused on data collected to ensure safe staffing levels. I have adjusted several of the care staff shifts and included more shifts across the day and evening to ensure the level of care at Eventide Homes is maintained at a high quality. I continually monitor data and staff levels to make changes if required. More equipment required to cater for increased resident numbers has been purchased in the last twelve months to maintain a safe level of quality care.

The Flu vaccination program provided at Eventide Homes this year has proved to be extremely successful as we have had no reported cases of the Flu to date.

In May 2018 we received an unannounced spot Clinical Audit from the Department of Health. The major focus was on infection control and behaviours. The audit was extremely positive, and all expected outcomes were met. Throughout the visit the auditor remarked on the 'robust systems in place' here at Eventide Homes.

Our energetic lifestyle team have continued to develop innovative and stimulating programs. A focus has been on residents maintaining their independence and assisting with jobs around Eventide Homes which gives them a purpose. Overall the activity program has improved with many new activities included into the already busy program. New programs have allowed much more interaction and integration between all of the residents throughout Eventide.

I look forward to the future challenges placed ahead, with variations to the Aged Care Accreditation Standards, the Master Plan hostel alterations, along with our very own accreditation scheduled for 2019 here at Eventide Homes.

Catherine Potter

Catherine Potter
{Care and Lifestyle Manager}



Out & About



Eventide Classic



*Eventide Bus volunteer driver
Ted Broda ready for an outing*



*Cliff Mayberry working in the
vegetable garden*



*Community Luncheon at The
Powerhouse*



Silo Art Bus Trip



Lunch at Lake Wendouree



Vintage Car Town Tour



*Residents at the Christmas
Street Parade*



*South West Tafe Walking
Group*

Leisure & Lifestyle Report

The last 12 months have once again seen a busy and fun time for our residents, with many and varied activities creating fun, laughter and stimulation for all. The focus in the leisure and lifestyle program for this past 12 months has been for residents to become more involved with meaningful jobs within Eventide, aiming to achieve quality outcomes to enable residents to live life as fully as possible.

Residents from Warne House and the General Hostel now assist with delivering the daily newspapers, announcing and writing up the activity program, helping to set up and clear up for special functions such as cappuccino afternoons, the Eventide pub lunches, the Valentine's Day Ball and Spring Ball and weekly church services. Residents assist staff with morning and afternoon tea, making beds in Warne House, folding tea towels, setting up and clearing tables, setting up and clearing the crossword board and reading the Stawell Times News twice weekly to fellow residents.

Our resident organist enhances the lives of both the Warne residents and hostel residents with her keyboard skills and beautiful music on a regular basis.

Our keen gardeners have their special areas in which they assist in beautifying Eventide. A spectacular vegie patch provides many vegetables and herbs for family and friends. A specially erected glass house is home to many beautiful house plants that can be brought into Eventide to beautify the Hall for special functions and the indoor garden area in Grampians House, where residents can relax and enjoy a rain forest setting.

All of these meaningful activities promote independence and self-esteem through the recognition of individual strengths, needs and interests.

The lifestyle program has also introduced "Eventide Encounters" a new program to encourage interaction of Warne residents with the General hostel residents. This includes the weekly cappuccino afternoons, special afternoon teas, various entertainers and other suitable activities such as craft and games.

The monthly Eventide Pub allows residents from Warne House and the general hostel to make a reservation and "dine out" in the surrounds of Glyn Cashin Hall which is adapted to look like a Pub. The Eventide Homes Theatre is enjoyed by all who attend with choc top ice creams and popcorn readily available.

Residents remain active in the community.

The residents are busy throughout the year always putting in an entry in the annual Christmas Tree Festival, participating in the Stawell Biz Christmas parade and knitting and crocheting items to pack in the Christmas boxes which are then sent overseas for underprivileged children.

Regular visits are made to the Stawell library in conjunction with Story time to allow intergenerational interaction - cuddles with babies and time to develop relationships with the little ones and their Mums and Grandparents. Not to forget those residents who enjoy the independence of choosing their own reading material and catching up with friends at the library.

Residents are in the process of assisting the Stawell Historical Society with a video for their web site reminiscing about life in the early days of living in Stawell.

Fundraising functions such as the Biggest morning Tea for cancer, Mother's Day classic walk and coffee afternoons and raffles, provide an opportunity for residents to continue to assist others in need.

Leisure & Lifestyle Report - *Continued*

Regular Outings In The Community

The highlight of the outings was the Inter facility outing to Ballarat – A Picnic lunch at lake Wendouree with residents from Glendale in Werribee allowed residents to socialise while in the lovely surrounds of Lake Wendouree. Some of the outings that were enjoyed throughout the year were:- The Moyston sheep dog trials, Ararat lunchtime concerts, Cato Lake walks, Anglican Church Devonshire morning teas, Daffodils in the Grampians and the Uniting Church Art Exhibition.

Special Functions

Many cultural events are held throughout the year - Australia Day celebrations, Valentine's Day/Spring Balls, Spring racing events, Christmas and Easter functions, Mother's/Father's Day celebrations, Winter Olympics Grand Final Football Afternoon, BBQ Lunches, Three monthly birthday parties, Anzac Day Service, Blokes Only afternoons and our Service of Remembrance which assists with the grieving process and allows time for reflection of members of the Eventide family who have passed away.

Visiting Entertainers

Visiting entertainers are an important part of our leisure and lifestyle program bringing much laughter and enjoyment to our residents. We especially thank the entertainers who visit Eventide regularly - Carmel Phelan, Keith Haymes, Bob Fry, Geoff Harmer and Christine Johnston and Neil Thornton.

Visits from the Grampian's Vintage club, Senior Citizen's singing group, Eileen Bowen - harpist, The Two Allan's, Something In the Air, St Patrick's school choir, Anglican church choir, Stawell Brass Band, Mum's and Bubs group, Jamie and Kim's Zoo, Blume's Fashions, Stawell Calisthenics' group, Newcombe secondary college band, Giovanna and the Zumba group - (including Roxy, Katia and Eve, our lovely dancers) and various guest speakers and artists were enjoyed by all.

Spiritual Care

Ministers/lay people, of many denominations assist our residents with spiritual care throughout the year. The chapel area and Cashin Hall are used regularly for church services, prayer, bible studies and reflection.

A huge thank you to the leisure and lifestyle team, and all our wonderful volunteers who give up their time and talents to enhance the lives of our residents. Without their help we would not be able to offer the variety of programs and run programs so successfully.

Grace and Wendy

Grace Rethus & Wendy Dumesny
{Leisure & Lifestyle Supervisors}

Below: Wendy & Dorothy Maddocks



Below: Grace & Julie Campbell



Meet Charlie

Charlie Owen has been playing piano since he was a boy, learning the skill from his father. These days he uses his musical prowess to entertain the residents and staff at Eventide Homes. Charlie plays the piano effortlessly. By memory, and with no printed music, he can put his hand to almost anything.

Born in London, Charlie relocated to rural Australia to escape the war with his family when he was only three years old.

The family settled well into country life in Australia, and before long Charlie was married

with three children of his own. All of which now have babies of their own. Charlie enjoys their visits when they make the drive down from Melbourne to visit.

Although Charlie moved into Eventide Homes only earlier this year, he has quickly made friends with residents and staff and is totally enjoying everything Eventide has to offer.

Resident profiles completed by
Stawell Secondary College Students.

Below: Sonia Griggs & Charlie Owen



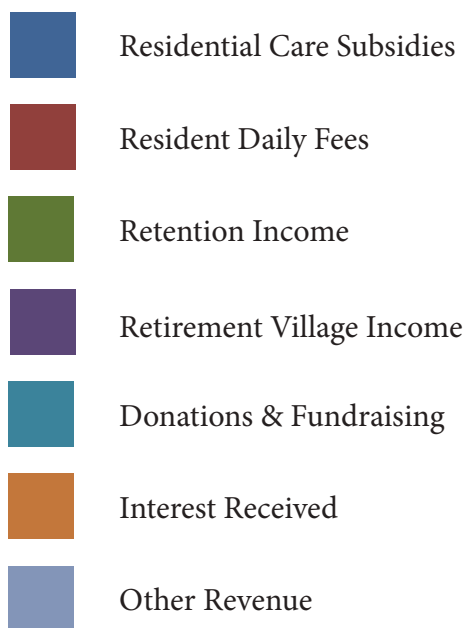
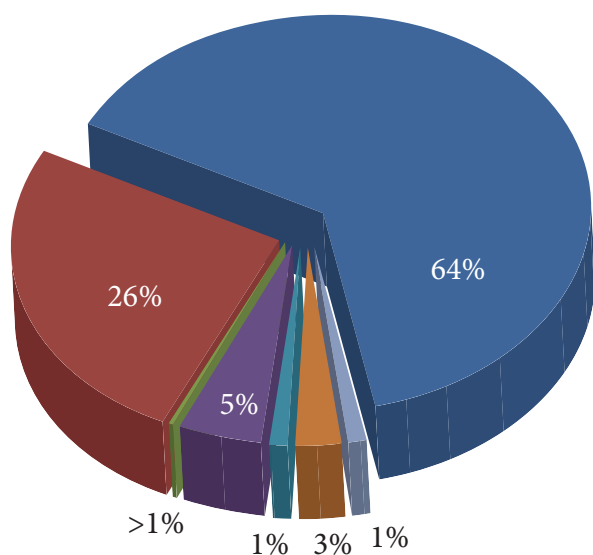


Financials At A Glance

2017 - 2018

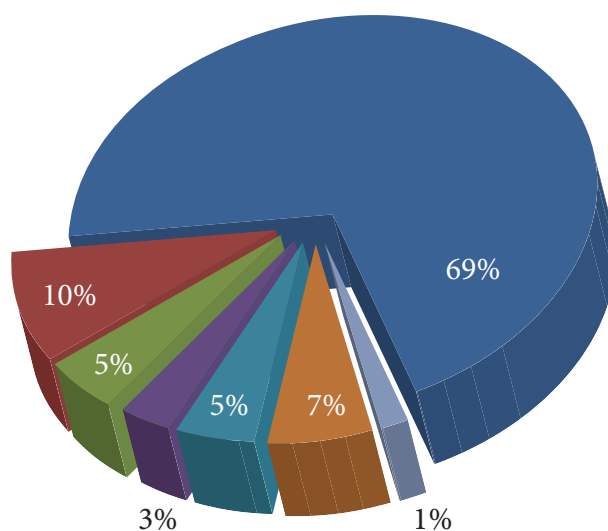
Income

2017 - 2018



Expenses

2017 - 2018



A full set of the audited financial report, performed by a registered company auditor, will be provided upon request.

Income & Expenses Statement

	YEAR ENDED JUNE 30 th , 2018	YEAR ENDED JUNE 30 th , 2017
INCOME		
Residential Care Subsidies	5,957,738	5,039,824
Resident Daily Fees	2,398,705	2,229,970
Retention Income	22,895	41,986
Retirement Village Income	445,716	437,426
Donations & Fundraising	11,0541	36,144
Interest Received	266,051	256,368
Other Revenue	85,166	65,874
TOTAL REVENUE	9,286,812	8,107,592
EXPENSES		
Salary & Employee	5,427,444	5,620,400
Depreciation	744,935	644,387
Food Supplies	385,557	368,143
Maintenance, Repairs & Utilities	261,042	242,729
Resident Care Services	382,639	362,314
Retirement Village Expenditure	512,200	456,057
Other Expenses	110,708	227,834
TOTAL EXPENSES	7,824,525	7,921,864
TOTAL	1,462,287	185,728

Statement Of Financial Position

For the Year Ended June 30 th , 2018	2018 \$	2017 \$
ASSETS		
<u>CURRENT ASSETS</u>		
Cash and cash equivalents	12,044,465	10,063,743
Trade and other receivables	158,074	145,946
Inventories	11,979	19,586
TOTAL CURRENT ASSETS	12,214,518	10,229,275
<u>NON-CURRENT ASSETS</u>		
Property, plant and equipment	16,961,596	16,980,653
TOTAL NON-CURRENT ASSETS	16,961,596	16,980,653
TOTAL ASSETS	29,176,114	27,209,928
LIABILITIES		
<u>CURRENT LIABILITIES</u>		
Trade and other payables	404,530	389,679
Employee benefits	546,027	570,343
Other liabilities	13,841,421	13,090,211
Borrowings	251,000	251,000
TOTAL CURRENT LIABILITIES	15,042,978	14,301,233
<u>NON-CURRENT LIABILITIES</u>		
Employee benefits	493,577	480,423
Borrowings	1,150,417	1,401,417
TOTAL NON-CURRENT LIABILITIES	1,643,994	1,881,840
TOTAL LIABILITIES	16,686,972	16,183,073
NET ASSETS	12,489,142	11,026,855
EQUITY		
Retained earnings	12,489,142	11,026,855
TOTAL EQUITY	12,489,142	11,026,855

Year At A Glance



Star of "Annie" Bonnie Mellor performs at Eventide



Board of Governance dinner with Stawell Regional Health



Grampians House Atrium New Shade Structure

Winter



South West TAFE Students Commenced Aged Care Studies



Springtime Ball



Sunday afternoon Entertainment "Leo & Sandra"

Spring



Oaks Day Celebrations



Grace & Dawn selling 'Movie Greats' Calendar in Main Street



Christmas Parade

Year At A Glance



*Australia Day
Celebrations*



*New Glasshouse
for residents*



Pub Luncheons

Summer



Valentine's Day Ball



*Plantation
Development*



Eventide Classic

Autumn



*New Furnishings for
Grampians House*



*Retirement Village
Monthly Bus Excursion*



*Solar Panel
Installation*



Contact

111 Patrick Street, Stawell

PO Box 169, Stawell

P | (03) 5358 2027

F | (03) 5358 4163

E | administration@eventidehomes.com.au

W | www.eventidehomes.com.au

eventide 
homes
STAWELL INC.